

Using CURef via Web VPN and VPN Program

CURef, CU Reference Databases, is a webpage that collects online databases subscribed by the Office of Academic Resources (OAR), Chulalongkorn University (CU) for CU users that are faculties, students, and staff. CU users can access to the databases on CURef via Chulalongkorn University Network (CUNET). For off-campus access, users need to access to the databases via Web VPN or VPN program which are services of the Office of Information Technology, CU.

Web VPN

Use CURef via Web VPN

- Go to <https://vpn.chula.ac.th/>
- Enter CUNET user name and password and then click on **Login**



Login

Please enter your username and password.

USERNAME:

PASSWORD:



Login

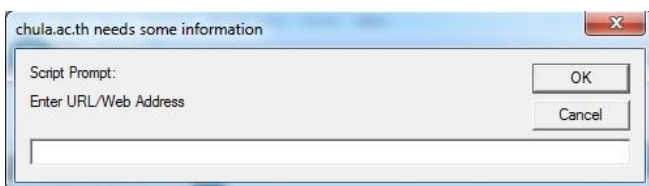
- Type CURef address, www.car.chula.ac.th/curef, in Web VPN browser and click on **Browse**





- Access to CURef as within the campus

Web VPN Tools

-  : Move VPN tool icons to other side
-  : Go to address, entering URL/Web address in the box and then click on **OK**

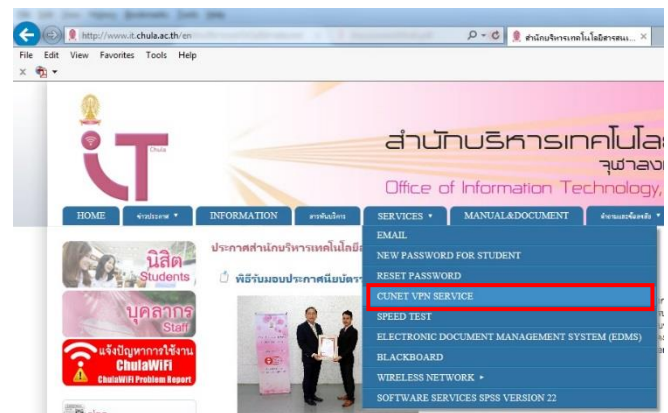


-  : Go to Chulalongkorn University homepage
-  : Log out

VPN Program

Download VPN program (for Windows)

- Go to <http://www.it.chula.ac.th/en>
- Click on **CUNET VPN SERVICE** under **SERVICES**



- Click on **โปรแกรม Cisco AnyConnect VPN Client (for Windows)**

CUNET VPN service

โปรแกรม

- โปรแกรม Cisco AnyConnect VPN Client (for Windows)**

Windows 8.1 32-bit ,64-bit
Windows 8 32-bit ,64-bit
Windows 7 32-bit ,64-bit
Windows vista 32-bit ,64-bit
Windows XP Service Pack 3 (SP3) 32-bit ,64-bit

- [โปรแกรม Cisco AnyConnect VPN Client \(for Mac สำหรับทดลองใช้งาน\)](#)

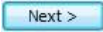
Mac OS X 10.6 (Snow Leopard)
Mac OS X 10.7 (Lion)
Mac OS X 10.8 (Mountain Lion)
Mac OS X 10.9 (Mavericks)

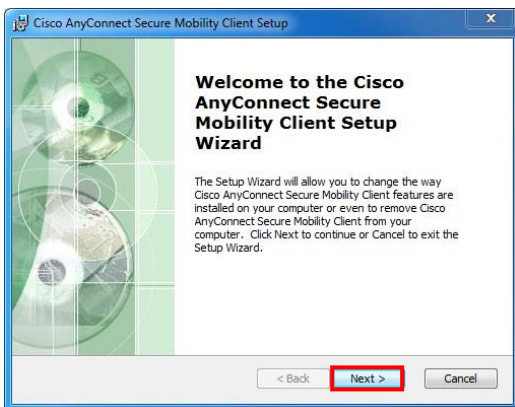
- Enter CUNET user name and password and then click on **OK**

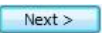


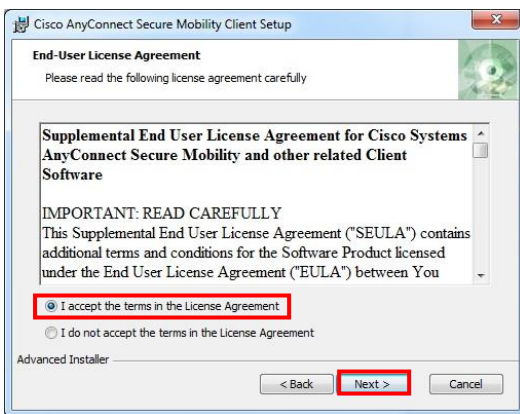
- Save the set up file

Install VPN program

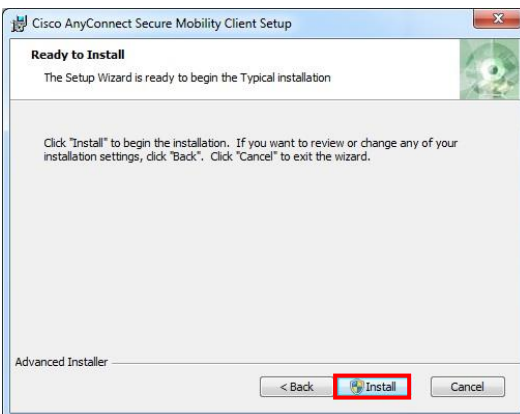
- 1 Run the set up file
- 2 Click on 



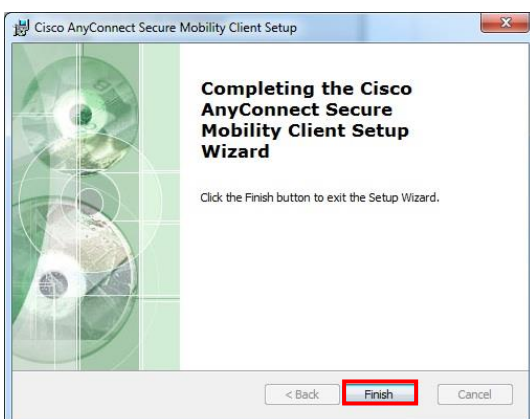
- 3 Select I accept the terms in the License Agreement and click on 




- 4 Click on 

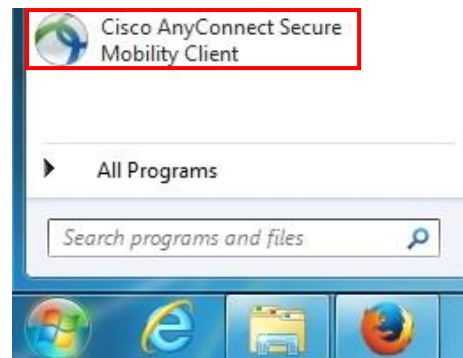


- 5 Click on 

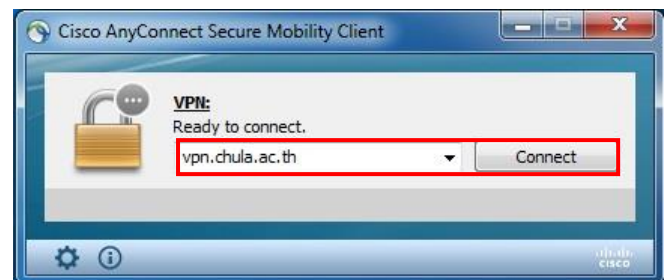


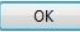
Run VPN Program

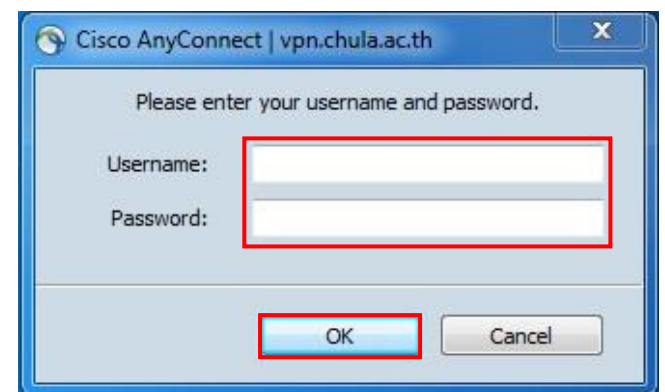
- 1 Click on **Cisco AnyConnect Secure Mobility Client** or  to start the program



- 2 Enter **vpn.chula.ac.th** in the box and click on 



- 3 Enter CUNET user name and password and click on 



- 4 After the screen shows as follow, open a browser and go to www.car.chula.ac.th/curef and then access to CURef as within the campus



- 5 To disconnect, click on  and then click on 

